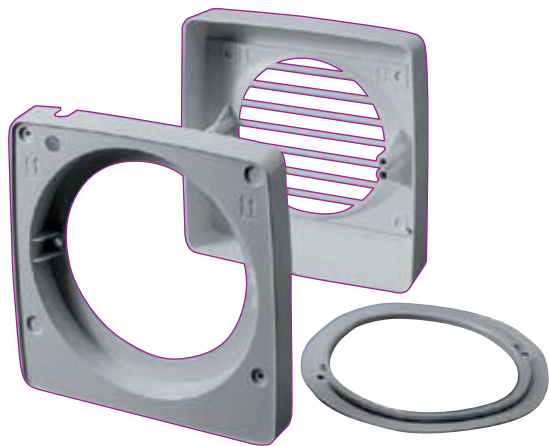


Ancillaries

Window fixing kit EW100/EW150

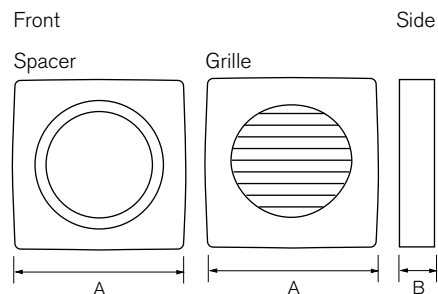
Features

- Suitable for 4 – 28mm glazing
- Comprises external louvred grille and window spacers
- Suitable for EL100 bathroom and EL150 kitchen fans



Physical specification

All measurements in millimetres.



	EW100	EW150
A	150 x 150	200 x 200
B	60	75
Glazing Hole	118	167

Materials: Semi matt ABS Plastic
UV stabilised

Flexiduct flexible PVC & aluminium ducting

Features

- Suitable for use with all Airvac centrifugal and induct fans where ducting applications are required
- Lightweight & easily formed
- Available in PVC or aluminium
- Range of diameters & lengths to suit a variety of installations
- Robust construction
- Ideal for refurbishment or short lengths in loft spaces



Physical specification

All measurements in millimetres.

Insulated Flexible ducting (supplied without clips)

GFA4.10I	Ø100mm, 10m long
GFA5.10I	Ø125mm, 10m long
GFA6.10I	Ø150mm, 10m long

Aluminium ducting (includes 2 metal jubilee clips)

GFA4.3	Ø100mm, 3m long
GFA4.10	Ø100mm, 10m long
GFA5.3	Ø125mm, 3m long
GFA5.10	Ø125mm, 10m long*
GFA6.3	Ø150mm, 3m long
GFA6.10	Ø150mm, 10m long
GFA80.10	Ø80mm, 10m long*

* No clips provided.

PVC ducting (includes 2 plastic fixing clips)

GFP4.1	Ø100mm, 1m long
GFP4.3	Ø100mm, 3m long
GFP4.10	Ø100mm, 10m long
GFP5.3	Ø125mm, 3m long
GFP5.10	Ø125mm, 10m long
GFP6.3	Ø150mm, 3m long